

# ***Guidelines of Ethernet for Using a Star Dvice***

***- Windows -***

## Guidelines for Using a Star Ethernet Device on Windows

The star device's IP address must be set in advance to use a star device that supports LAN. If your LAN environment does not allow acquisition of an IP address from a DHCP server, set the IP address to the star device in advance.

### 1. Setting a Temporary IP Address

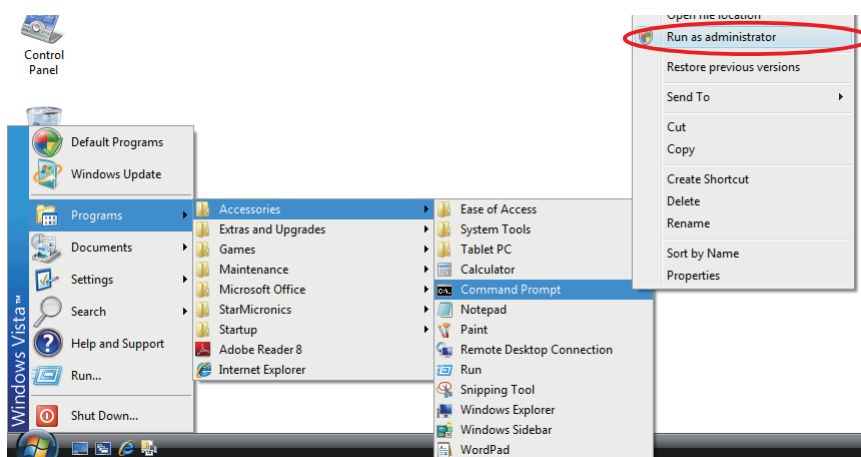
You can use the following procedure to set a temporary IP address for a star device. Use of a temporary address will allow you to connect to a star device that does not yet have an IP address setting.

**Point!** The MAC address of the star device to be set is necessary for the temporary IP address. Confirm the MAC address in a self-print from the printer. See the Hardware Manual for details on running a self-print.

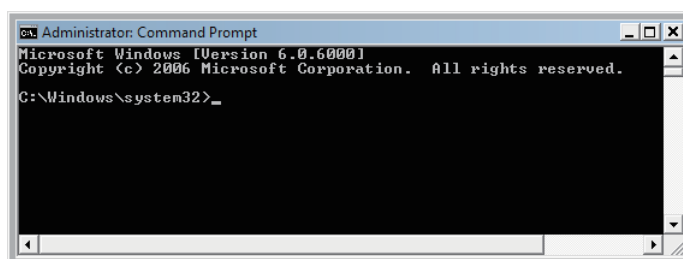
For other than printers, the MAC address is printed on the label attached to the device.

- ① At the Windows Start menu, select **All Programs – Accessories – Command Prompt**. (If using Windows 7 or Vista, right-click on **Command Prompt** and select **Run as administrator**.)

<<On Windows Vista>>



- ② At the command prompt, use the **arp** command to set a temporary IP address using the MAC address.



Use the following commands to set the temporary IP address for the star device.

1. **arp -d** star\_device's\_temporary\_IP\_address
2. **arp -s** star\_device's\_temporary\_IP\_address star\_device's\_MAC\_address
3. **ping** star\_device's\_temporary\_IP\_address
4. **arp -d** star\_device's\_temporary\_IP\_address

**Example:** To set a temporary IP address of 192.168.32.55

```
arp -d 192.168.32.55
arp -s 192.168.32.55 00-11-62-00-03-4D
ping 192.168.32.55
arp -d 192.168.32.55
```

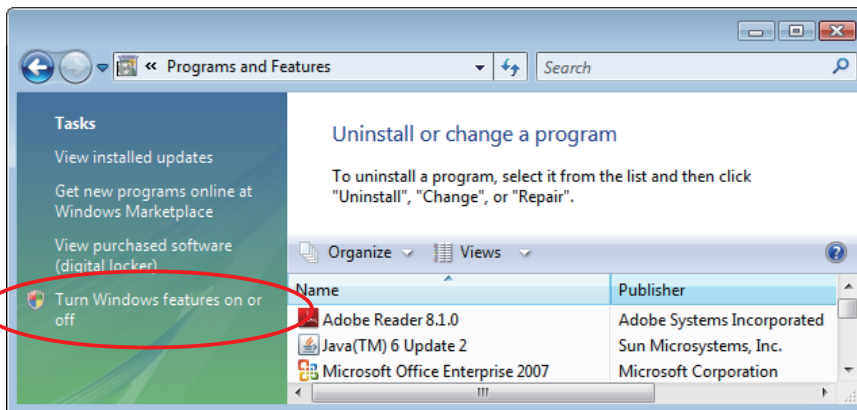
**Point!** The temporary IP address that you set here will be cleared when the star device's power is switched off. You should therefore immediately proceed to set a regular IP address for the star device.

## 2. Setting an IP Address

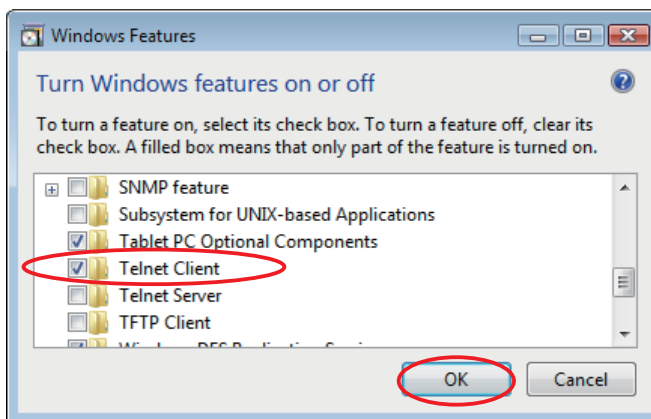
You can use the telnet command to connect directly to a star device.

■ If using Windows 7 or Vista, begin with the following preliminary steps to ensure that Telnet is enabled.

- ① From the Start menu, open the Control Panel.
- ② Select Programs and Features.
- ③ Under Tasks, select Turn Windows features on or off.



- ④ When the User Account Control dialog appears, click Continue.
- ⑤ If Telnet Client is not yet checked, place a check next to it. Then click OK.



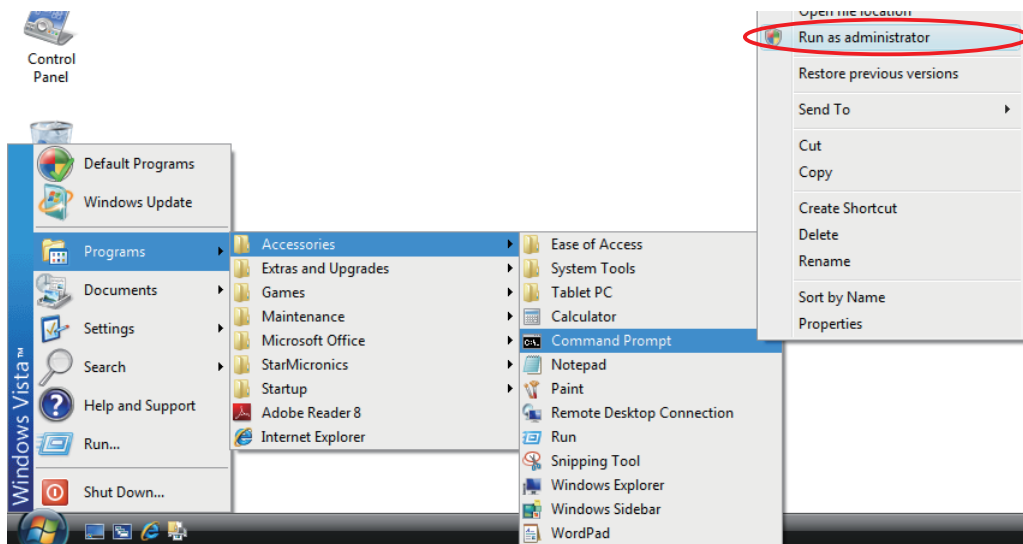
- ⑥ If Telnet Client was not already checked by default, you must now restart your computer.

To manually set the IP address, proceed as follows.

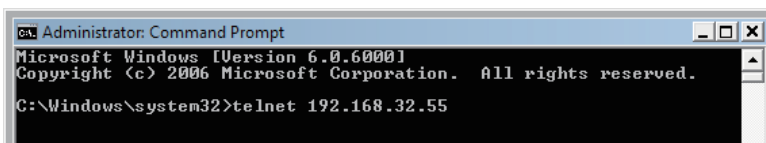
- ① Open the Command Prompt.

At the Windows Start menu, select **All Programs – Accessories – Command Prompt**. (If using Windows 7 or Vista, right-click on **Command Prompt** and select **Run as administrator**.)

<<On Windows Vista>>



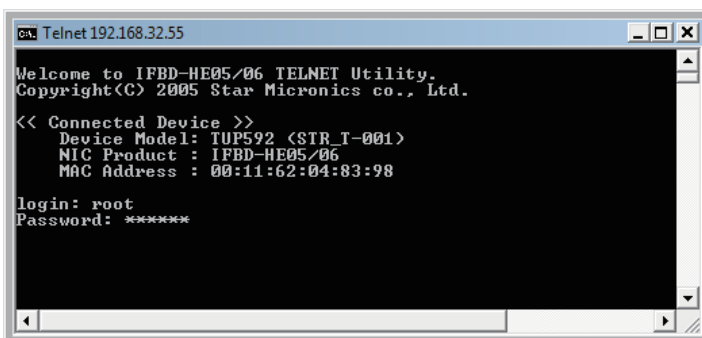
- ② Use the telnet command to connect to the star device you wish to set.



Example: > telnet 192.168.32.55  
 ↓  
IP address of the star device you wish to set.

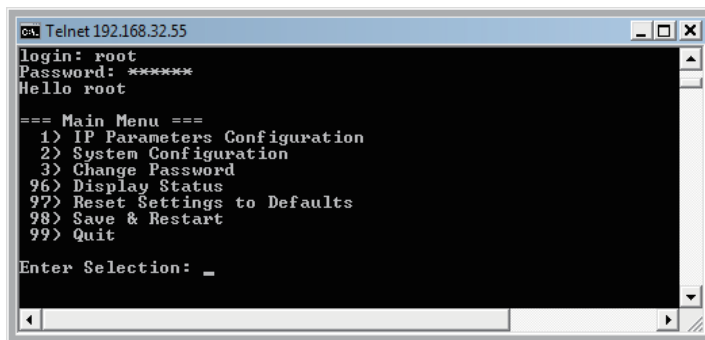
**Point!** You cannot connect to a star device that does not have an IP address. If necessary, set a temporary IP address for the star device before using telnet. For instructions, refer to Section 1., "Setting a Temporary IP Address."

- ③ Log into the star device as "root".  
 The factory default setting for the password is "public".  
 The default password can be changed after logging in.  
 If you've already changed the password, input it at this time.



- ④ The following menu appears.
- 1) IP Parameters Configuration
  - 2) System Configuration
  - 3) Change Password
  - 96) Display Status
  - 97) Reset Settings to Defaults
  - 98) Save & Restart
  - 99) Quit
- Enter Selection:

Enter the number corresponding to the action you wish to carry out.



```

c:\> Telnet 192.168.32.55
login: root
Password: *****
Hello root

=== Main Menu ===
 1> IP Parameters Configuration
 2> System Configuration
 3> Change Password
96> Display Status
97> Reset Settings to Defaults
98> Save & Restart
99> Quit

Enter Selection: _

```

- ⑤ When you have finished making settings, select 98 (Save and Restart) and then select either 1 (Save & Restart device and Configuration printing) or 2 (Save & Restart Device). This will save the settings and reset the star device.

**Example 1 :** To set the static IP address <192.168.222.55> on the star device set with the temporary IP address <192.168.222.217>, and check the settings by self-test.

```

>telnet 192.168.222.217
login : root
password : ***** ( Use "public" when not making changes. )
Enter Selection : 1 ( IP Parameters Configuration )
Enter Selection : 1 ( Static )
Enter Selection : 1 ( IP Address )
Enter IP address (x.x.x.x) : 192.168.222.55
Enter Selection : 99 ( Back to IP Address Menu )
Enter Selection : 99 ( Back to Main Menu )
Enter Selection : 98 ( Save & Restart )
Enter Selection : 1 ( Save & Configuration printing & Restart device )

```

\* The actual input portions are shown in **bold characters**.

**Example2** : To disable the #9100 Multi Session for the star device of the static IP address  
<192.168.1.35>, and check the settings by self-test.

```
>telnet 192.168.1.35
login : root
password : ***** ( Use "public" when not making changes. )
Enter Selection : 2 ( System Configuration )
Enter Selection : 2 ( #9100 Multi Session )
Enter Selection : 2 ( DISABLE )
Enter Selection : 99 ( Back to Main Menu )
Enter Selection : 98 ( Save & Restart )
Enter Selection : 1 ( Save & Configuration printing & Restart device )
```

\* The actual input portions are shown in **bold characters**.

**Notice**

- Company and product names are trademarks or registered trademarks of their respective companies.
- Reproduction of any part of this documentation is prohibited.
- The contents of this documentation are subject to change without notice.
- We can assume no responsibility for any results which may come out of the usage instructed in this documentation.



*URL: <http://www.starmicronics.com/support/>*